

THUMAMA PARK

ARABIAN HORSE PARK

PHASE II

AUTUMN 2011



# TABLE OF CONTENTS

## VISION STATEMENT

## THUMAMAH PARK LOCATION PLAN

## MASTERPLAN UPDATE

## ARABIAN HORSE PARK

CLOSE UP MASTERPLAN PHASE 1 AND 2

BIRD'S EYE PERSPECTIVE PHASE 1 AND 2

## ARABIAN HORSE PARK PHASE 2 GENERAL

DEVELOPMENT PLAN

BIRD'S EYE PERSPECTIVE PHASE 2

## ARABIAN HORSE PARK PHASE 2 MAIN ELEMENTS

### HORSE PARK VILLAGE

Plan, Location and Design Description

Bird's Eye Perspective

Eye Level View Perspective

### EQUESTRIAN ARENA

Plan, Cross Section Section and Design Description

Bird's Eye Perspective

Eye Level View Perspective 1

Inside-Out View Perspective

Eye Level View Perspective 2

### HORSE PARK HOTEL AND CHALETS

Plan, Cross Section Section and Design Description

Bird's Eye Perspective

Inside-Out View Perspective

Eye Level View Perspective



## VISION STATEMENT

### PHASE I ARABIAN HORSE NATURAL HABITAT

Phase one of the Arabian Horse Park Project in the Thumamah Nature Park aims to re-introduce the Arabian Horse to its natural habitat to improve its strength and re-activate its natural instincts. Young horses of the age between six months and two years will feed on the natural vegetation and tone their bodies while playing and galloping in the wide open spaces of the park before they begin their training at other institutions.

### PHASE II ARABIAN HORSE PARK

Phase two emphasises the important role of the Arabian Horse in the local culture and pays tribute to its pride and beauty. The majestic landscape of Thumamah Park together with the grace and beauty of the Arabian Horse creates the foundation for a sensitive and respectful development that would allow visitors not only to experience these animals in a natural environment, but build up a relationship to the Arabian Horse by riding through one of the most beautiful areas of Riyadh Region.



# LOCATION PLAN



0 5 15 25 [KM]

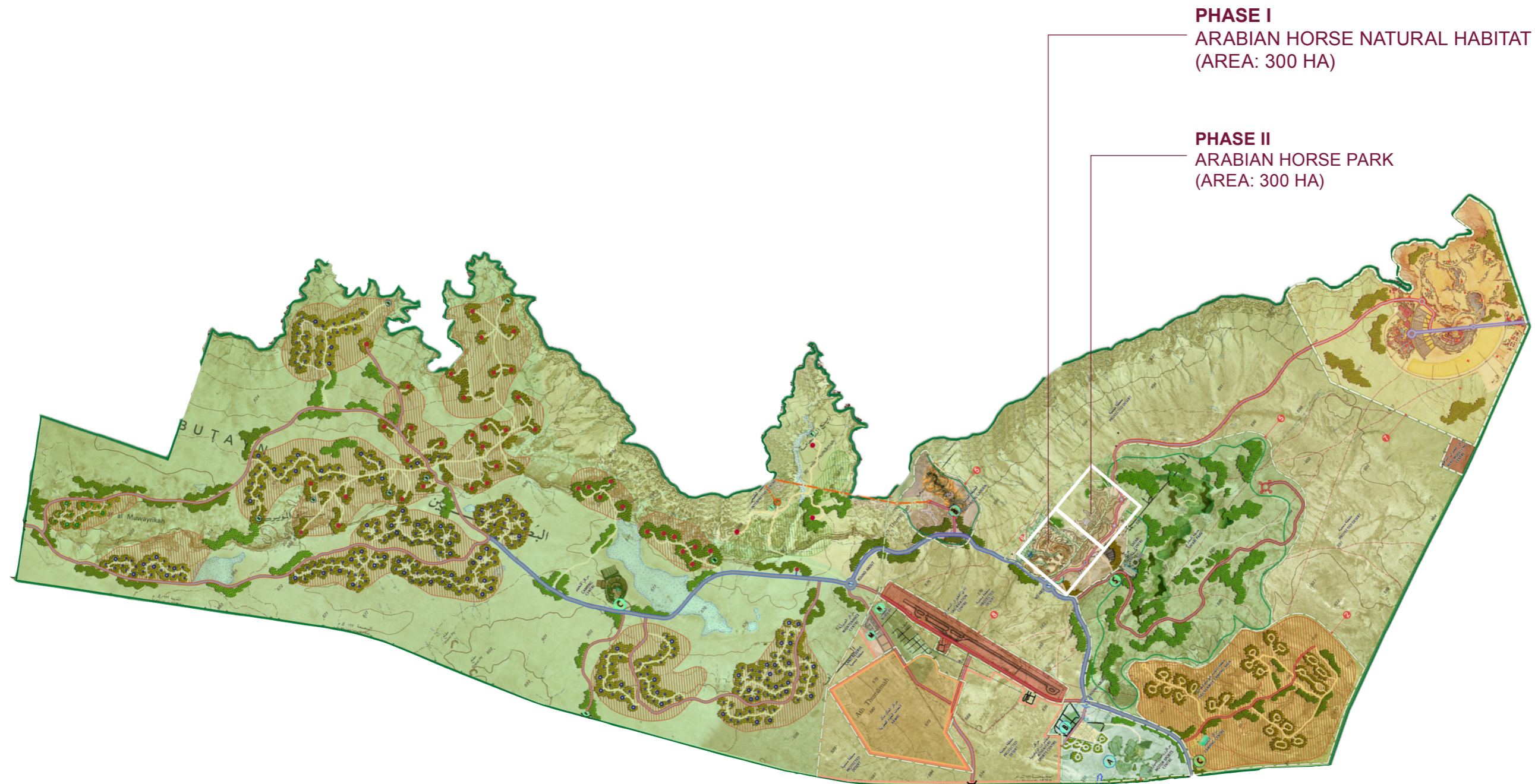


Arabian Horse Park Project  
Thumama Nature Park Arriyadh  
December 2011

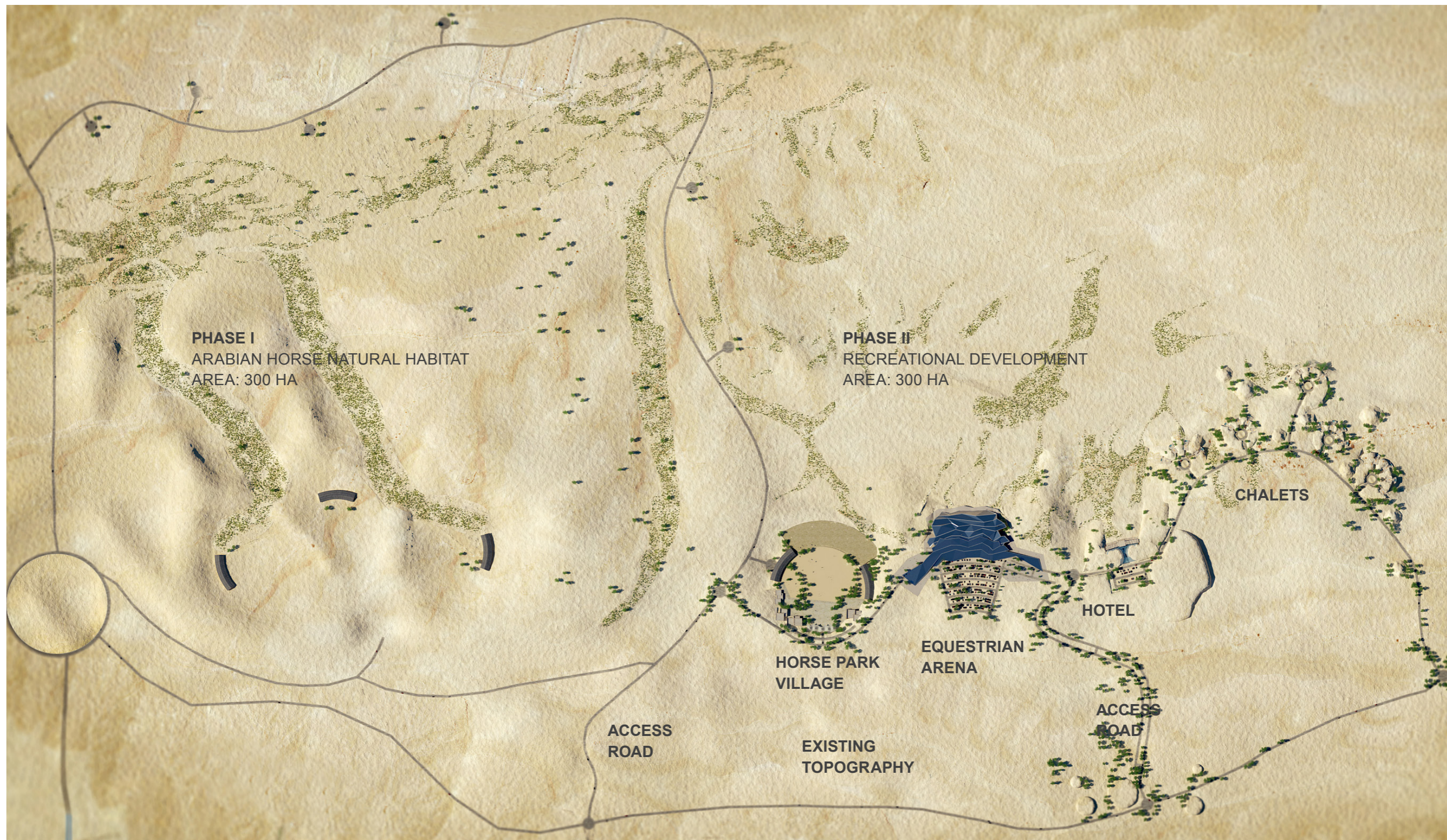


الهيئة العليا  
لتطوير مدينة الرياض

# EXISTING MASTER PLAN WITH PROPOSED DESIGN ADJUSTMENTS



# PROPOSED LANDSCAPE DESIGN PHASE I AND PHASE II



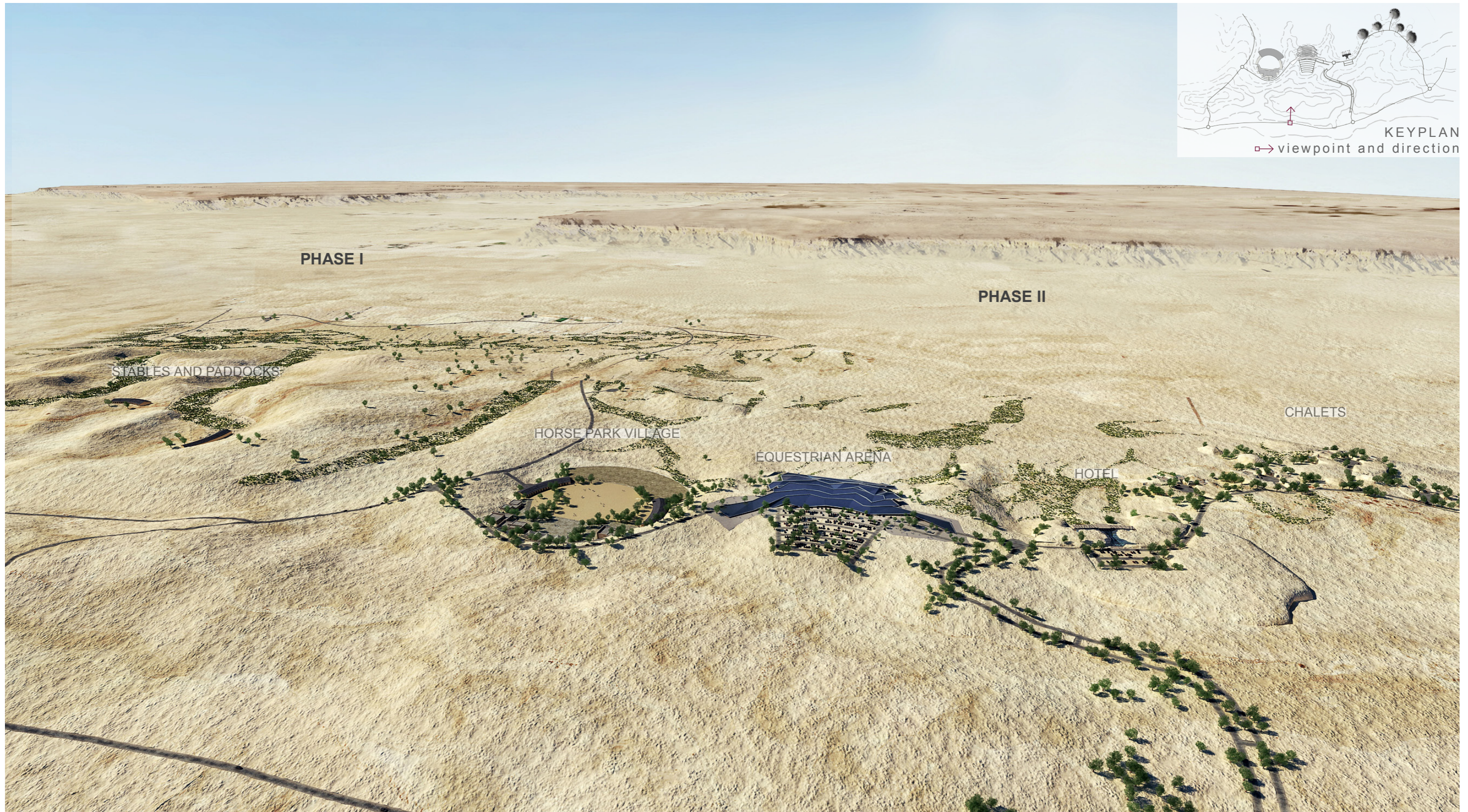
CONCEPTUAL LAYOUT  
scale 1\_10 000

Arabian Horse Park Project  
Thumama Nature Park Arriyadh  
December 2011



الهيئة العليا  
لتطوير مدينة الرياض

# BIRD'S EYE VIEW - PHASE 1 AND 2



# CONCEPTUAL DESIGN PHASE II



CONCEPTUAL LAYOUT  
scale 1\_5 000

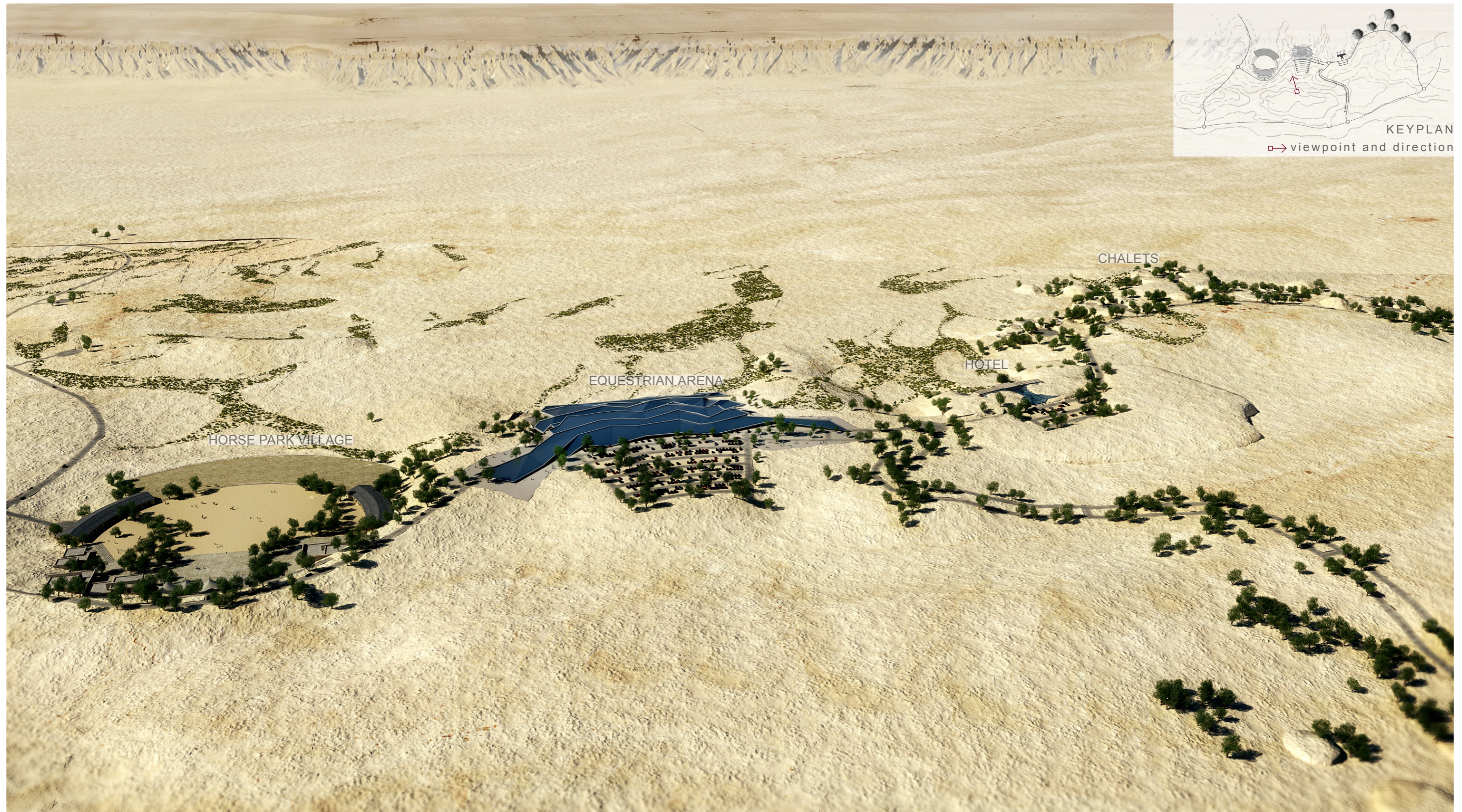
Arabian Horse Park Project  
Thumama Nature Park Arriyadh  
December 2011



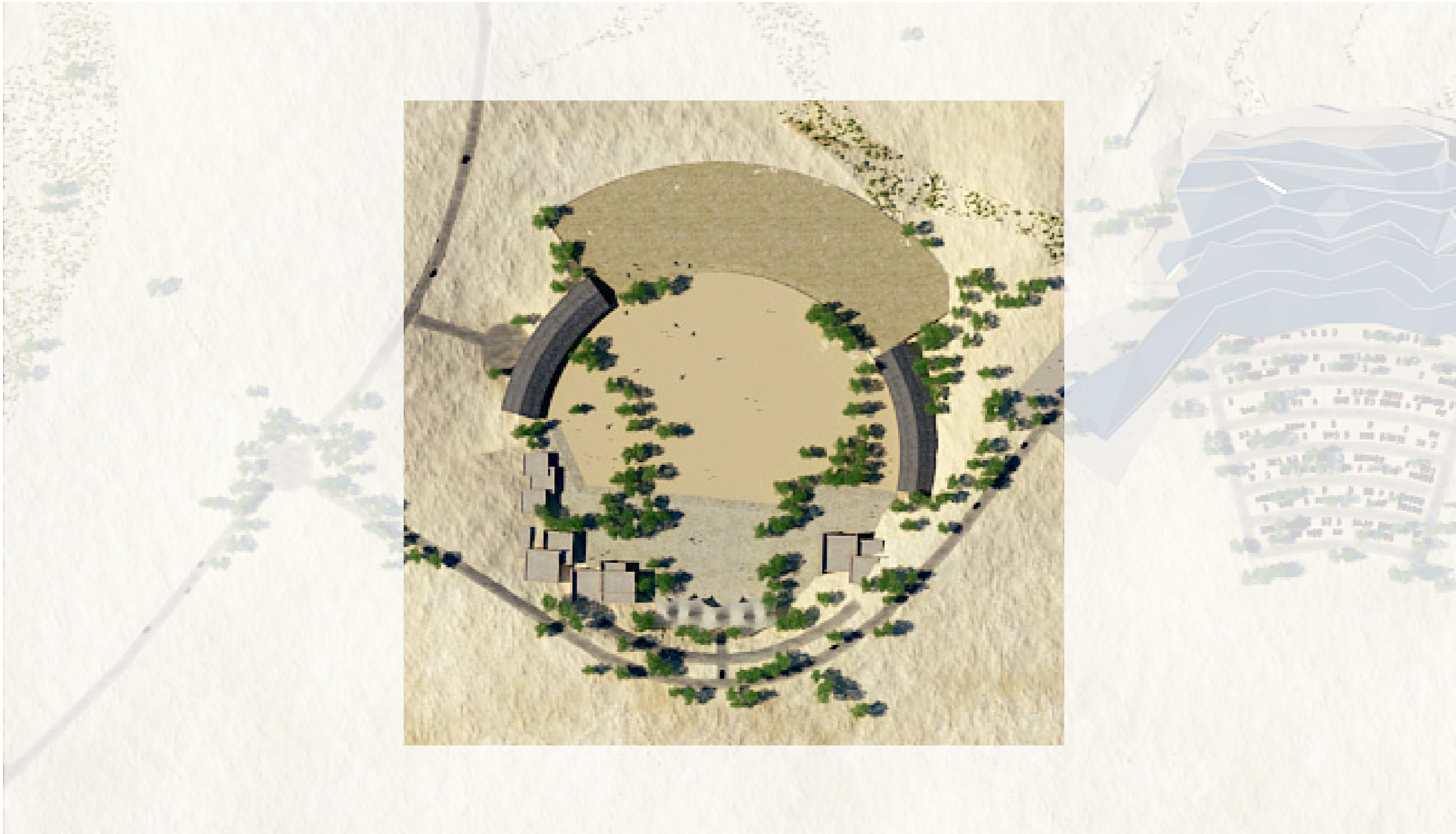
الهيئة العامة  
لتطوير مدينة الرياض



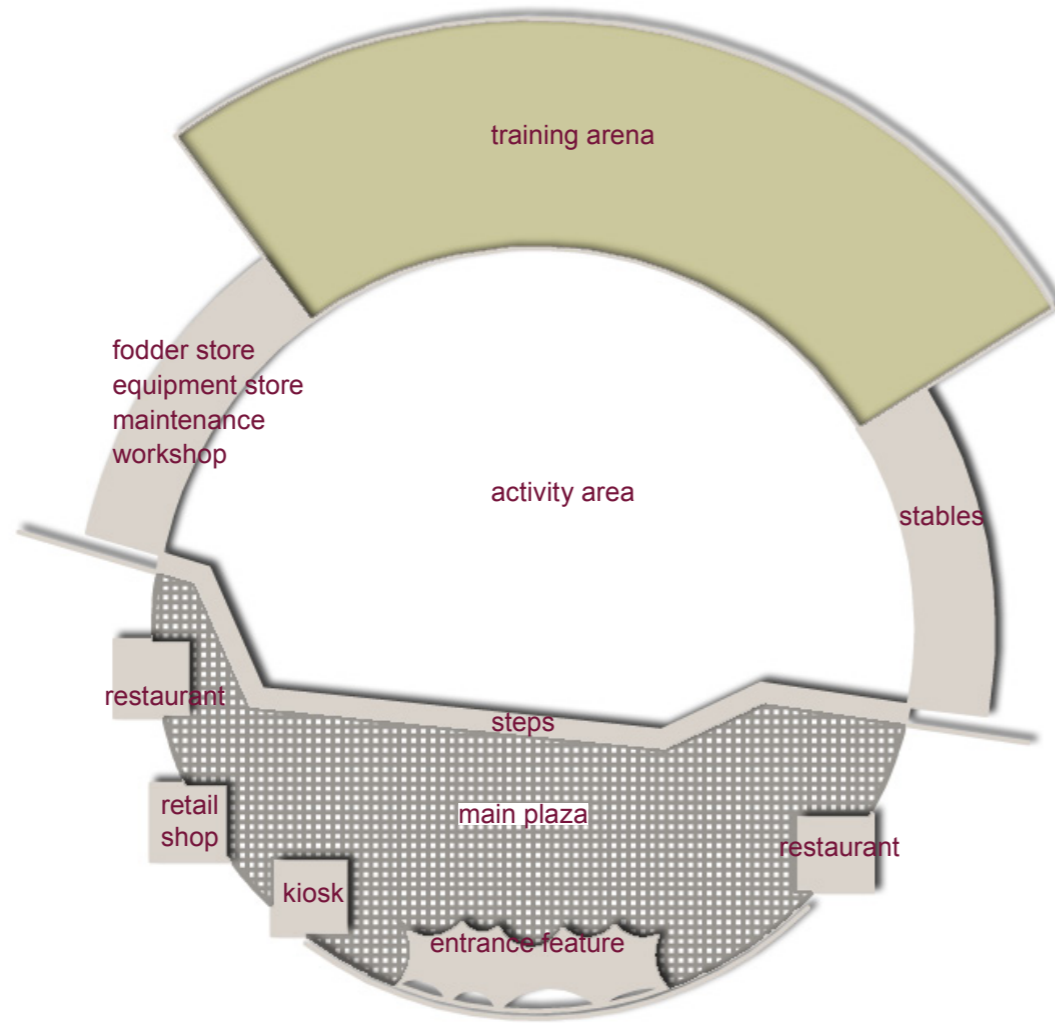
# BIRD'S EYE VIEW - PHASE 2



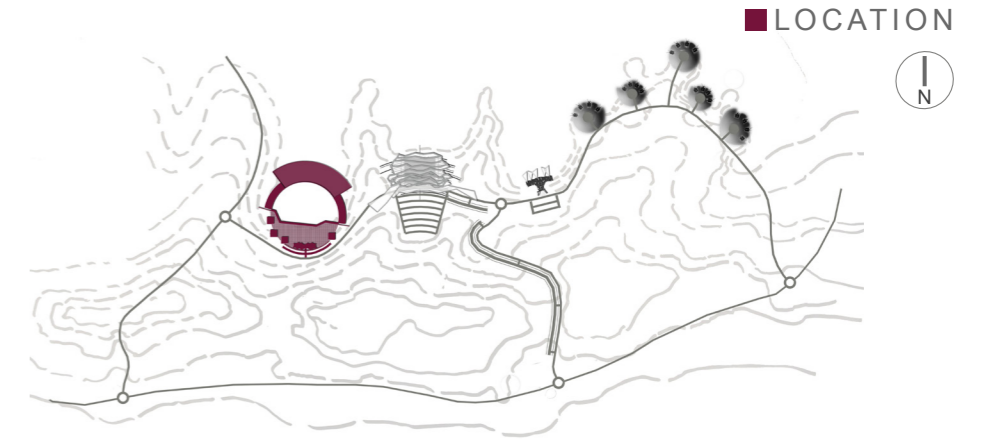
# HORSE PARK VILLAGE



# HORSE PARK VILLAGE



CONCEPTUAL LAYOUT  
scale 1\_2000



## FACILITIES

- 1 STABLE WITH 50 BOXES, OUTDOOR TRAINING ARENAS
- INDOOR FODDER STORE, EQUIPMENT STORE
- MAINTENANCE AREA | WORKSHOP, EQUINE VETERINARY CLINIC
- VISITORS RESTAURANT

## PRECEDENT IMAGES



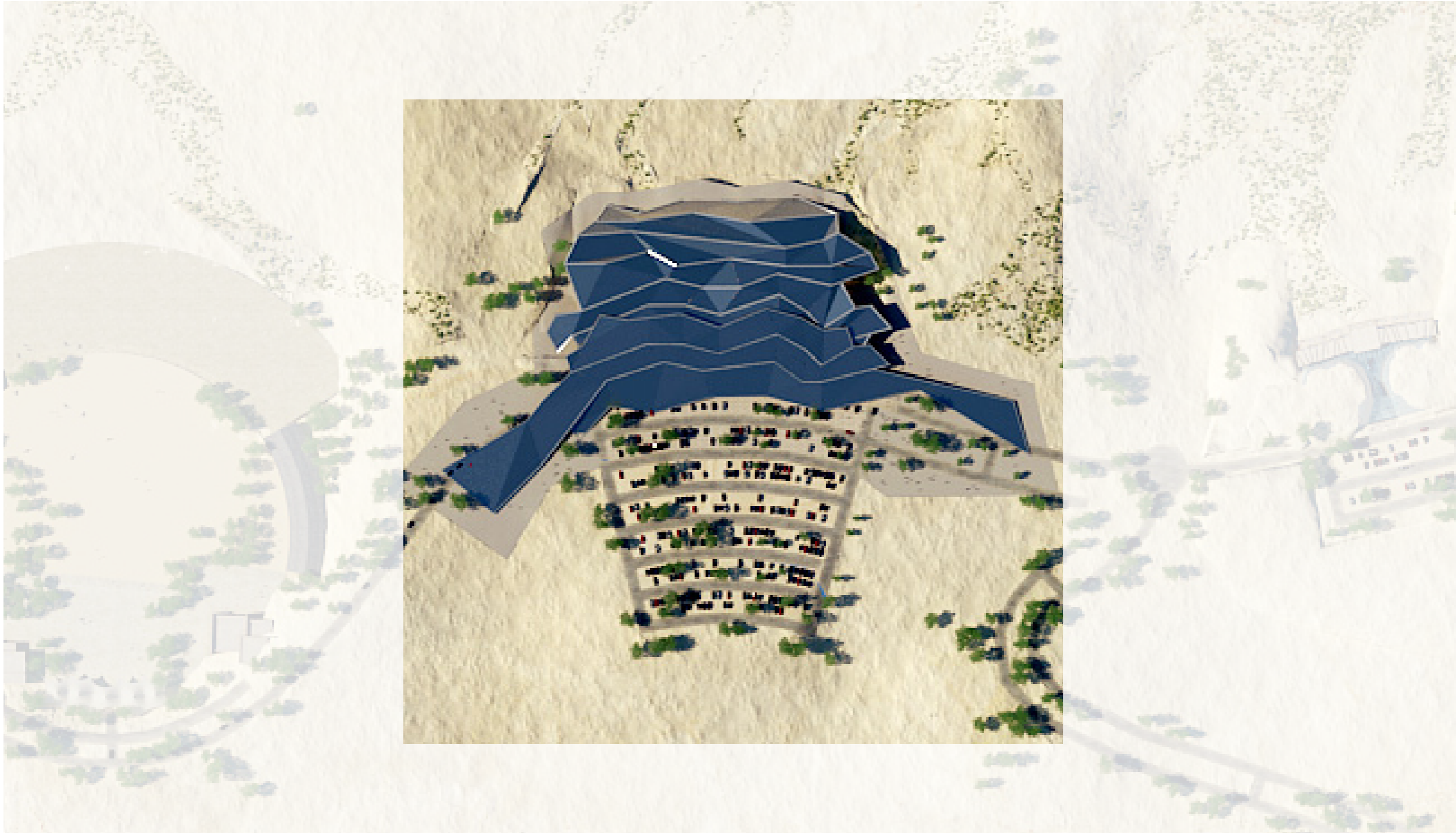
# BIRD'S EYE VIEW - HORSE PARK VILLAGE



# EYE LEVEL VIEW - HORSE PARK VILLAGE

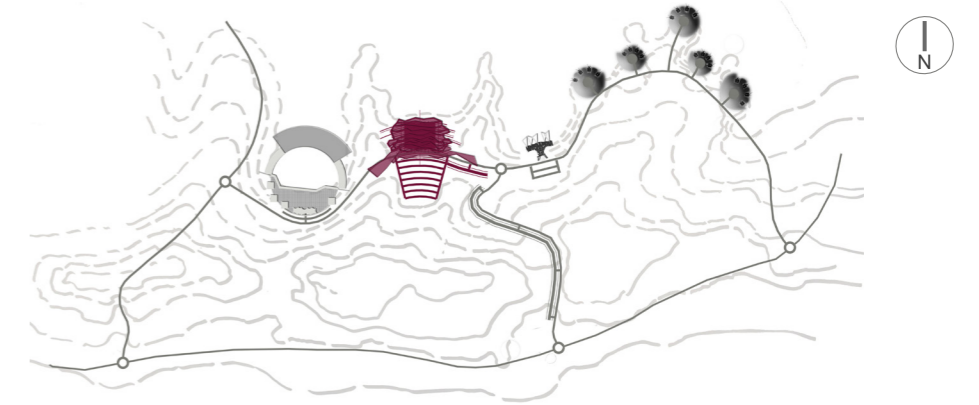


# EQUESTRIAN ARENA



# EQUESTRIAN ARENA

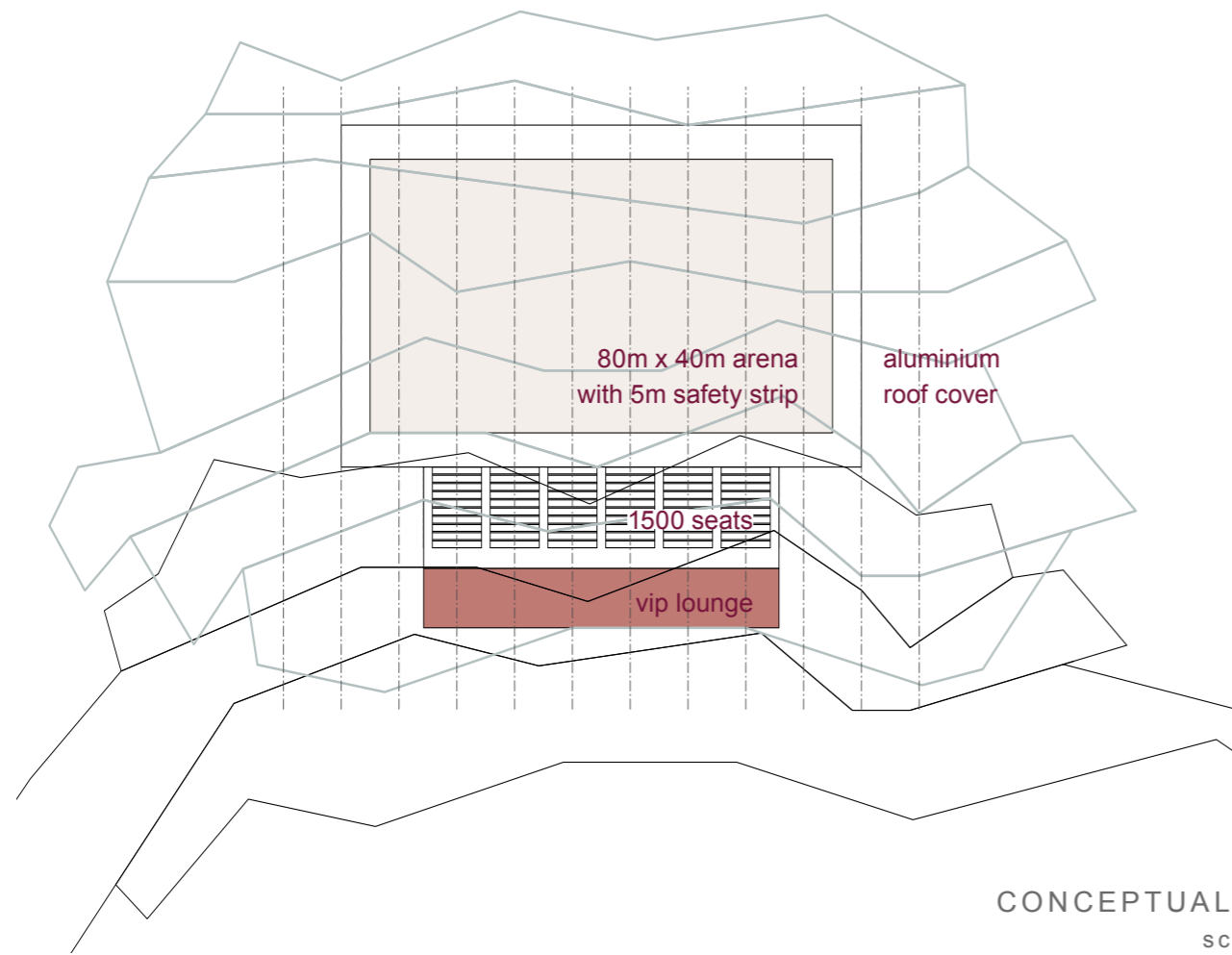
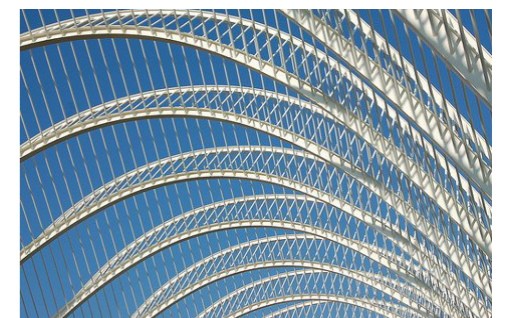
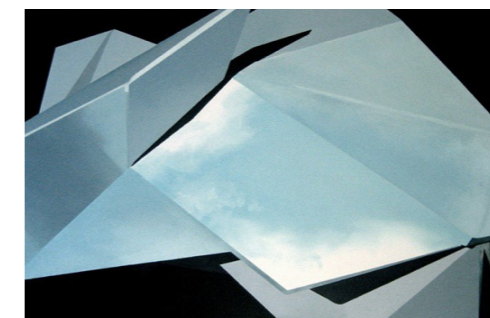
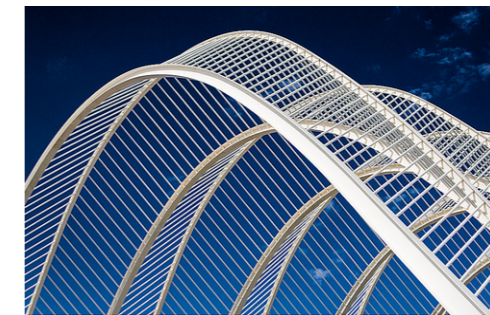
LOCATION



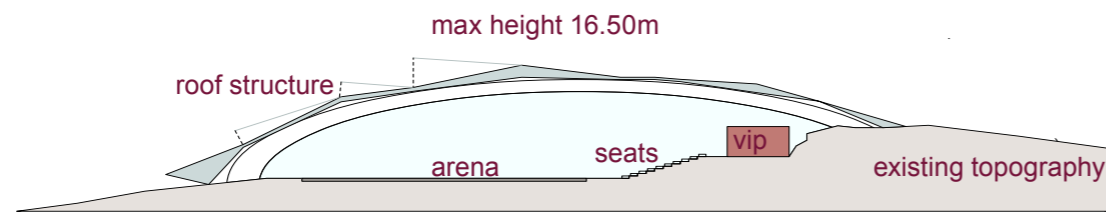
## FACILITIES

COMPETITION ARENA – 80M X 40M, SPECTATOR SEATING (1,500 PERSONS), 3 INDIVIDUAL VIP BOXES, EXHIBITION/GALA DINNER AREA (50 PERSONS), 2 RETAIL UNITS, TOILET FACILITIES ON SPECTATOR LEVEL FOR EACH SECTION, PRAYER ROOM WITH VIP AREA

## PRECEDENT IMAGES



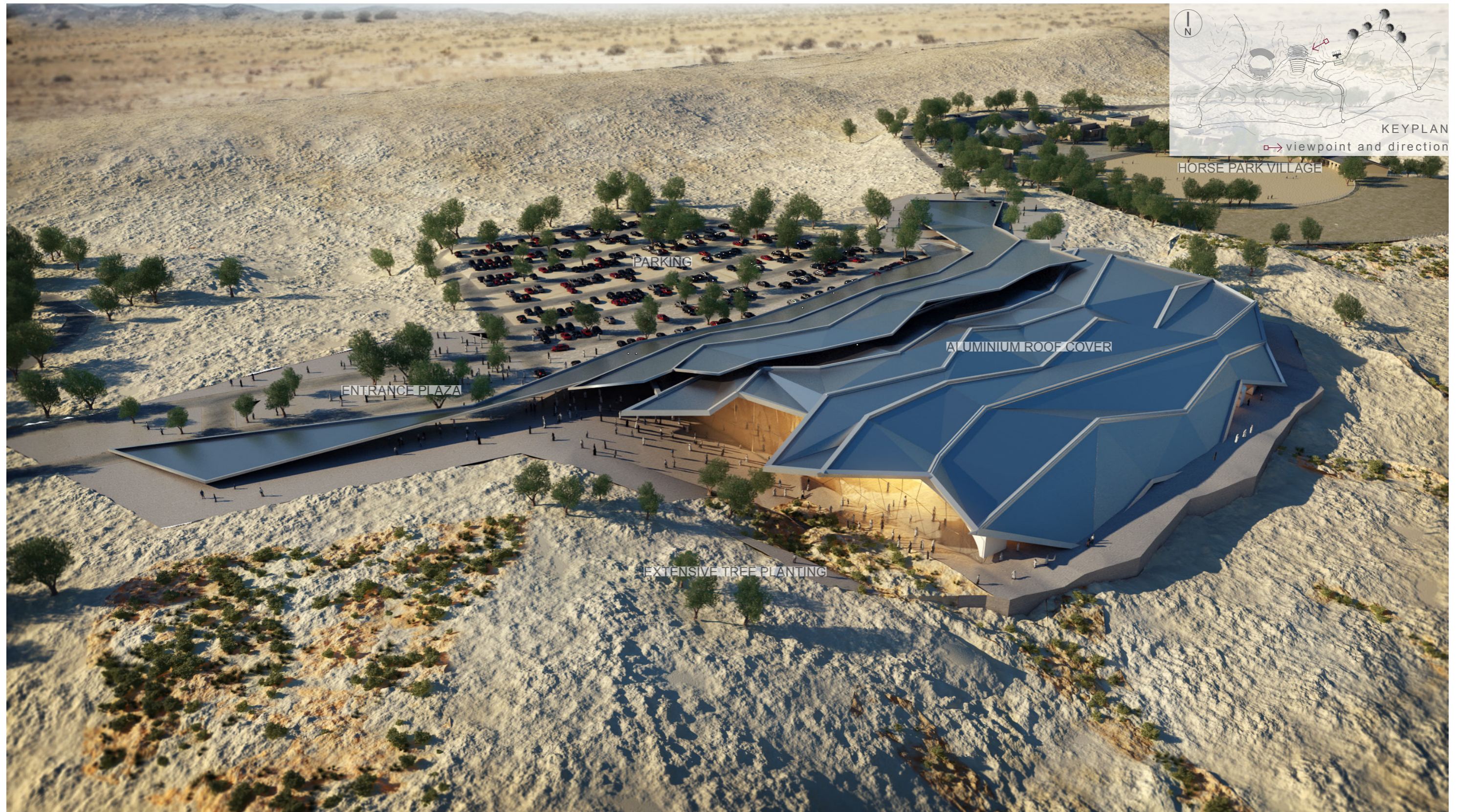
CONCEPTUAL LAYOUT  
scale 1\_1250



CONCEPTUAL CROSS SECTION  
scale 1\_1250

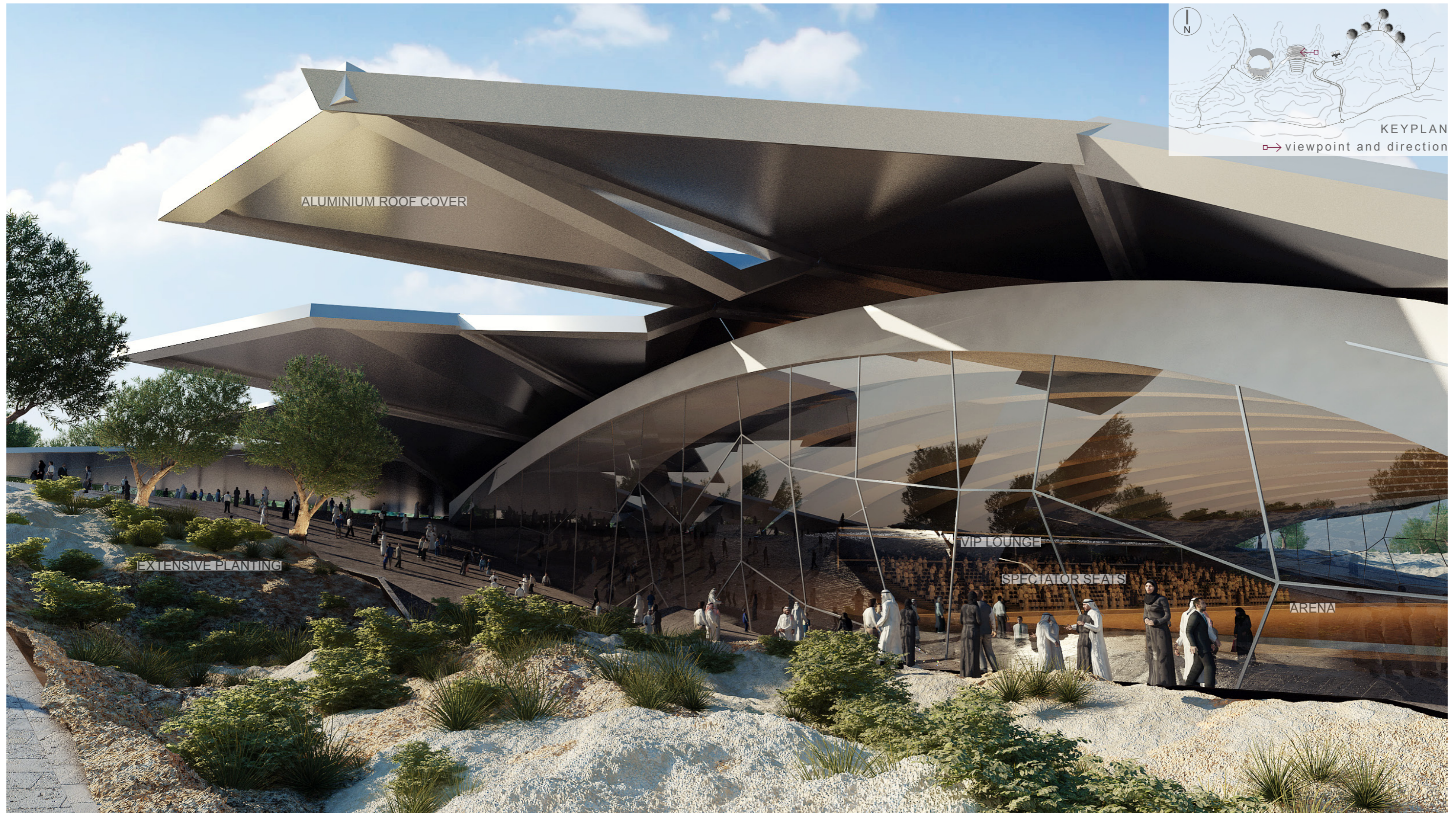


# BIRD'S EYE VIEW - EQUESTRIAN ARENA





# EYE LEVEL VIEW - EQUESTRIAN ARENA



# INTERIOR VIEW - EQUESTRIAN ARENA



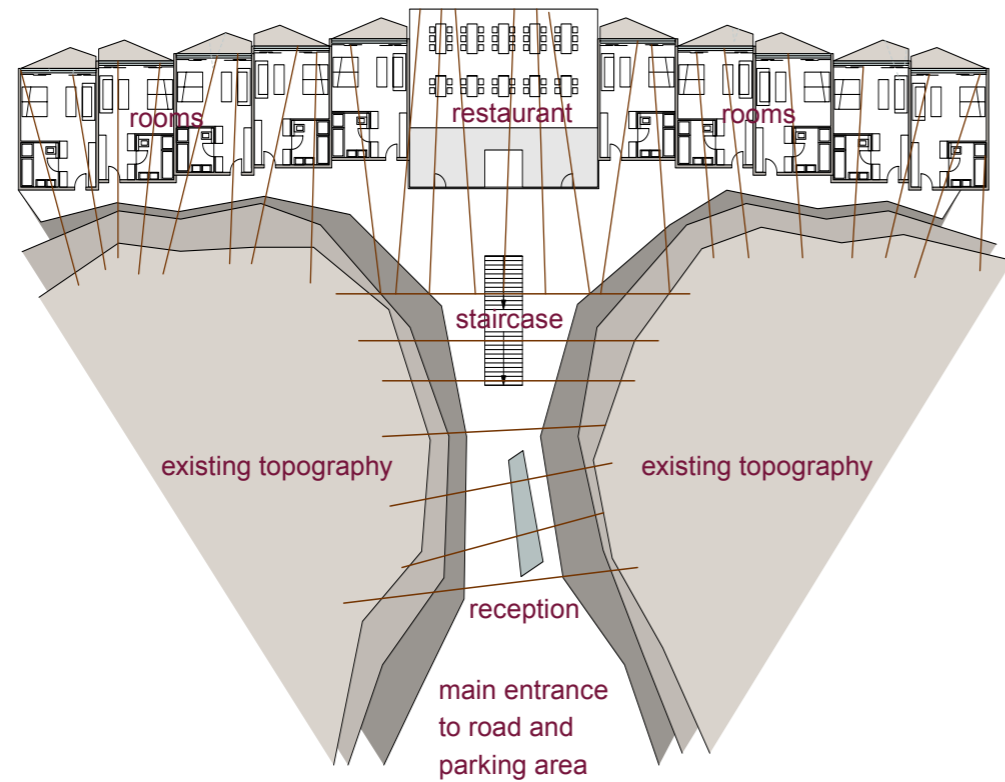
# EYE LEVEL VIEW - PARKING AND PLAZA AT EQUESTRIAN ARENA



HOTEL | SPA



# HOTEL | SPA

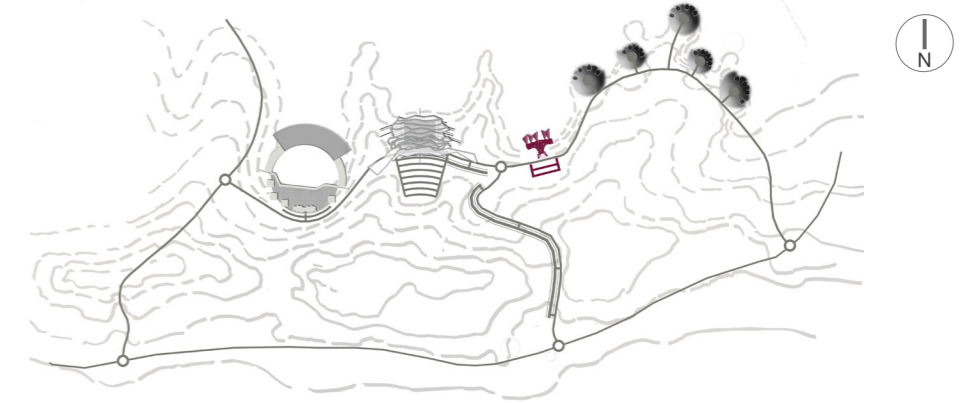


CONCEPTUAL LAYOUT  
scale 1\_500



CONCEPTUAL CROSS SECTION  
scale 1\_500

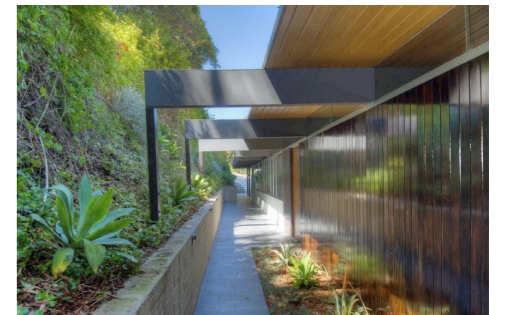
LOCATION



## FACILITIES

20 ROOMS on 2 LEVELS, VIEWING TERRACES, RESTAURANT, CAFE AND LOUNGE, SPA AND WELLNESS FACILITIES SUCH AS SWIMMING POOLS, MASSAGE ROOMS, SAUNA, STEAM BATH

## PRECEDENT IMAGES



# BIRD'S EYE VIEW - HOTEL | SPA



# INTERIOR VIEW ENTRANCE HALL - HOTEL | SPA



# EYE LEVEL VIEW - HOTEL | SPA

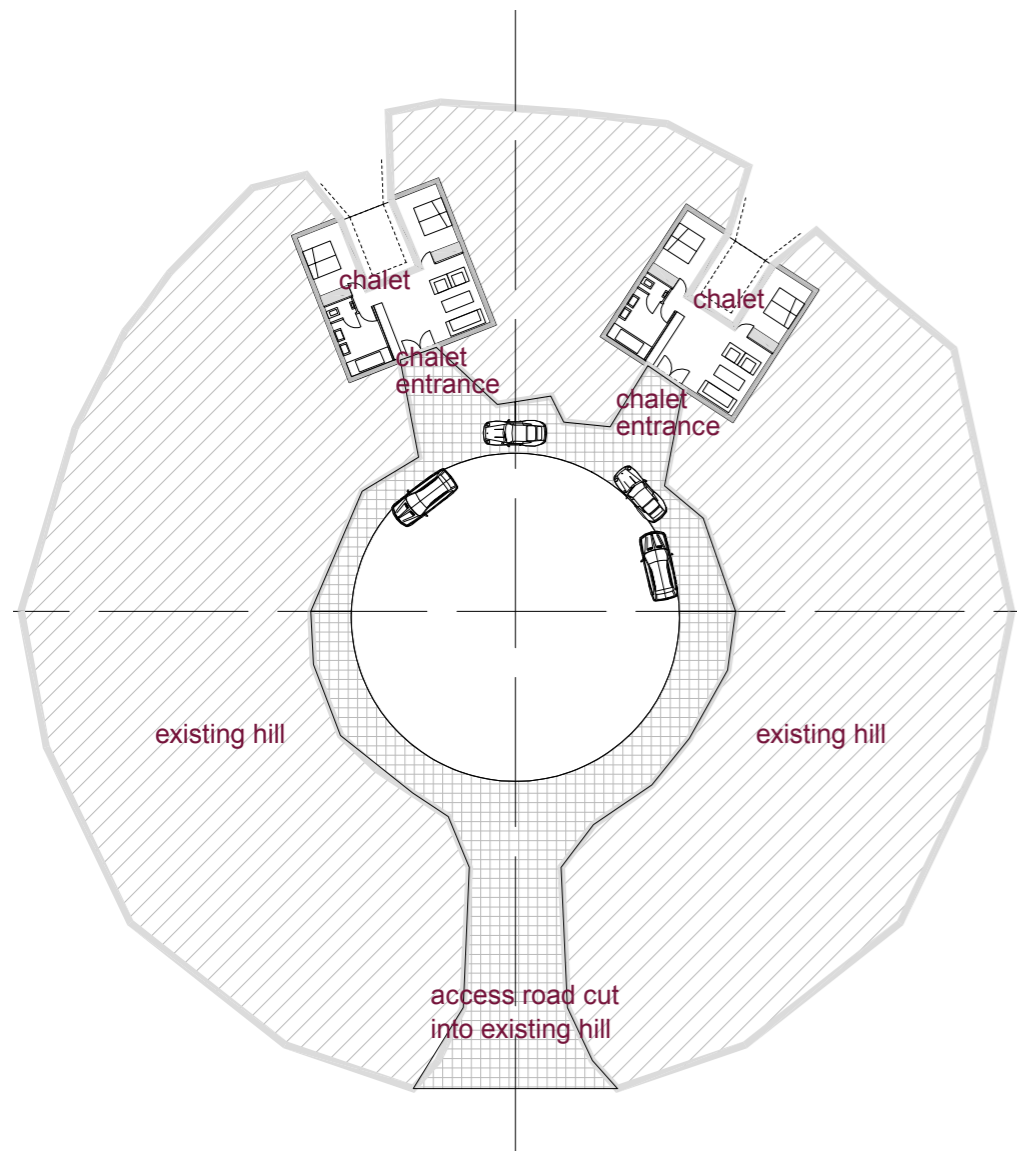




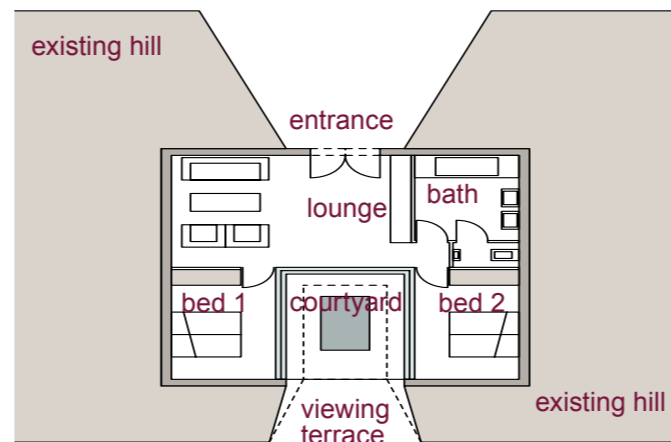
# CHALETS



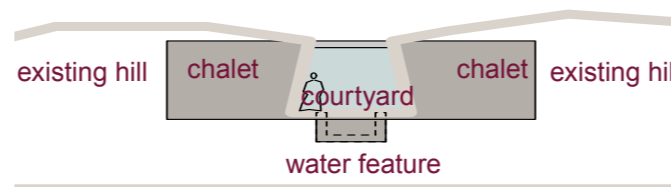
# CHALETS



CONCEPTUAL LAYOUT CHALET CLUSTER  
scale 1\_500

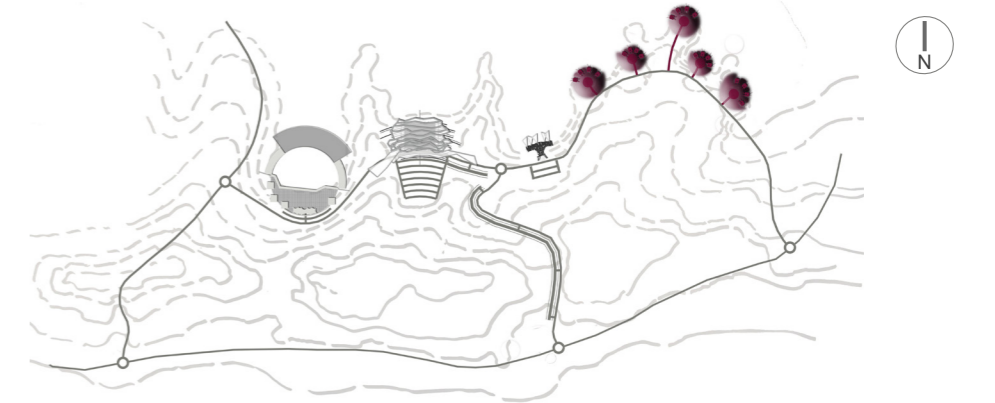


CONCEPTUAL LAYOUT CHALET  
scale 1\_200



CONCEPTUAL CROSS SECTION CHALET  
scale 1\_200

LOCATION



## FACILITIES

20 CHALTES EACH OFFERING SELF CATERING ACCOMMODATION FOR FOUR PEOPLE, INDIVIDUAL VIEWING TERRACES AND PLUNGE POOLS WITH VISUAL PROTECTION

## PRECEDENT IMAGES



# BIRD'S EYE VIEW - CHALETS



# INTERIOR VIEW - CHALETS



# EYE LEVEL VIEW - CHALET TERRACE

